



Yanta Poll Merinos & White Suffolks

Yanta Poll Merinos & Yanta White Suffolks



Newsletter July 2012



IMPORTANT DATES

9th July - Displaying at EP Merino Expo at Wudinna

7-9th August - Displaying at Cleve Field Days

21st September - YANTA On-property Sale

WELCOME

After one of the best years for a long time for meat and wool producers, prices have come back for both. This will make it more important to select sires with the potential to genetically breed superior offspring to make more money for producers. We are pleased to offer this information by using *MerinoSelect* and *Lambplan* to provide ASBV's for a variety of traits. *MerinoSelect* and *Lambplan* also



allow us to objectively analyse whether our flock is progressing in the important traits. Our Poll Merinos yearling growth rates



2011 RAM SALE

have increased significantly to now feature in the top 33% in Australia and our CFW in the top 25%. Our White Suffolks' Post Weaning Weights (the age when producers are turning off their lambs) have made equally large gains. These results are very satisfying and confirm that the stud is achieving significant progress. This has also been greatly helped by using semen from proven top sires, a strategy I intend to maintain.





Yanta Poll Merinos & White Suffolks

Yanta Poll Merinos & Yanta White Suffolks



WHITE SUFFOLKS

Our aim at Yanta White Suffolks is to purchase sires or semen that produce offspring that reach target weights quicker, have good eye muscle measurements and are not too lean. Research has shown tasting quality is being compromised by too leaner meat. To breed sheep with sufficient fat depth we have used semen from 2 prominent sires in Australia - **Bundarra Downs 086028** and **Gemini 060158**. Both have impressive ASBV's to achieve this objective.

This year's sale team will include offspring from the semen of **Ashmore 090069**

(pictured) which has bred some lovely balanced rams.



The 2 rams bought in Adelaide in 2010, **Burwood**

095560 and **Waratah 090576** will both be represented strongly in the sale team. Our Carcase+ figures in *Lambplan* are the highest we have ever achieved.

NEW SIRES USED 2012

Gemini 060158 (AI)

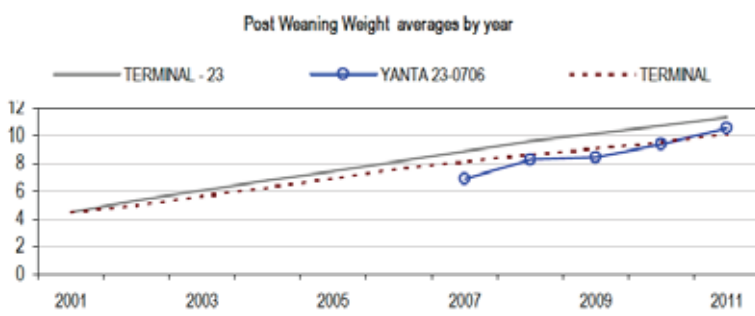
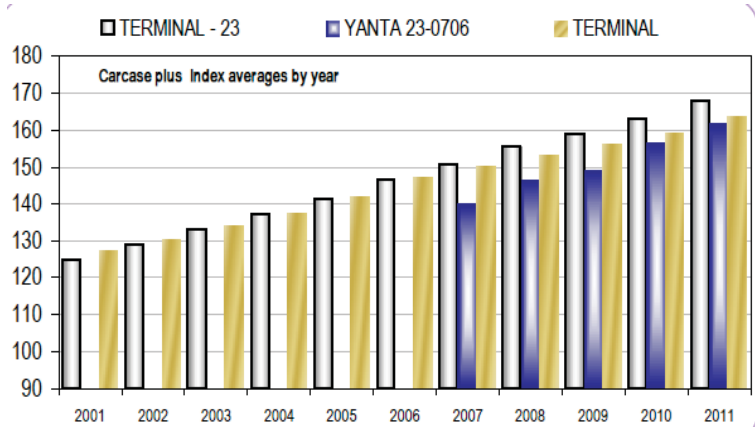
- High Post Weaning Weight (PWWT) **15.4kg** and Carcase+ Index **194**.
- Used by 7 other studs in Australia
- Breeder of top rams including **Gemini 090298** Junior Champion, Grand Champion Ram, Supreme White Suffolk Exhibit and Supreme all breeds short wool ram Hamilton Sheepvention 2010

Bundarra Downs 086028 (AI)

- Won Senior Champion Ram Royal Adelaide Show in 2009, Sold to Nalvin Park Stud for \$22,000.
- Well muscled and balanced ram with excellent EBV's to match carcass.
- High Post Weaning Weight (PWWT) **14.9kg** and Carcase+ Index **193**.
- Used by 20 other studs in Australia



All worker rams and potential ram breeders have been tested for Hypotrichosis (a rare genetic condition resulting in hairlessness)



Run date 15th June 2012



Yanta Poll Merinos & White Suffolks

Yanta Poll Merinos & Yanta White Suffolks



POLL MERINOS

Our aim to breed sheep that don't need mulesing has gone another step closer. The offspring from **Tuckwood Poll 091026** and **Toland Poll 091187** have helped us achieve this goal. These rams are producing good wool weights and high growth rates. **Leahcim 050154** sons bred and retained by us, have bred exceptionally well leaving long-stapled, white, lustrous wool. As we are always keen to have rams we purchase evaluated, we have entered 2 rams in the second *Information Nucleus* trial run by the CRC - **Orrie Cowie 097578** and **Glenville W20-21**. The **Orrie Cowie** ram is also being evaluated at Turretfield.

NEW SIRES

This year we have purchased semen from the following rams:

Kamora Park 070304 (AI)

- The Kamora Park ram has superb ASBV's especially for YCFW and Breech Wrinkle.
- Sired by **Nyowee E430**



Wallaloo Park "Casper"(AI)

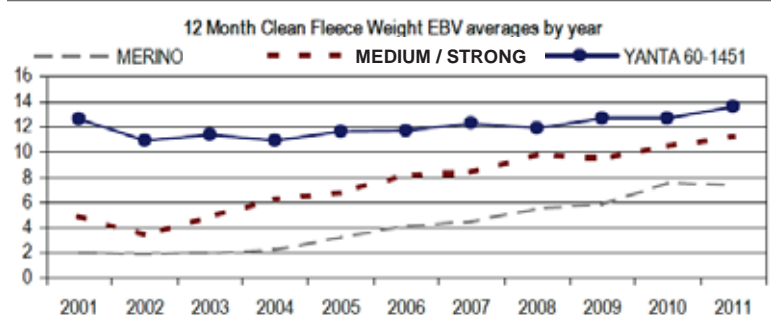
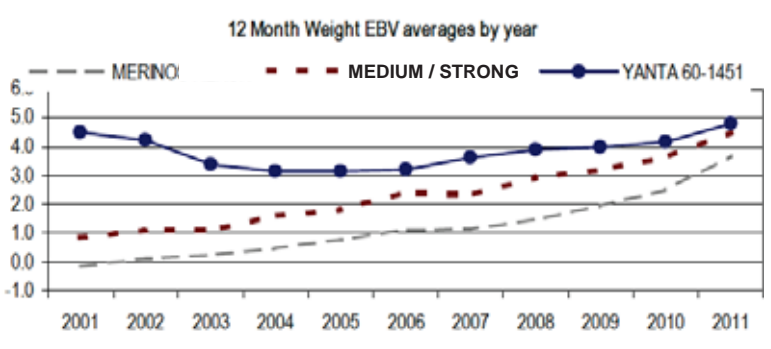
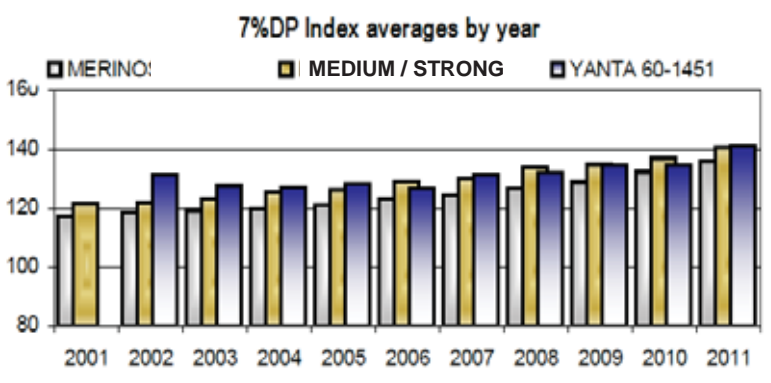
- Casper is a special poll sire with a perfect



fibre/carcass combination. His precision crimped wool is rich and very white. He is deep bodied and square with sound structure.

It all makes for an exciting future with:

- Increasing growth rates in progeny (see graph below for 12 month weight EBV)
- Increasing 12 month Clean Fleece Weight (see graph below)
- A discontinuation of the need for mulesing. (Breech wrinkle scores displayed in catalogue)
- And a continuing focus on breeding Elite Wools by visual classing.





Yanta Poll Merinos & White Suffolks

Yanta Poll Merinos & Yanta White Suffolks



PREVIOUS SALE RESULTS

	Offered	Sold	Average	Top Price
2009				
White Suffolks	79	79	\$1172	\$2800
Poll Merinos	36	17	\$632	\$700
2010				
White Suffolks	99	89	\$935	\$2200
Poll Merinos	30	27	\$1141	\$2650
2011				
White Suffolks	98	75	\$1039	\$2600
Poll Merinos	40	35	\$1277	\$2400



2011 top priced Poll Merino Ram purchased by Julian Webb



2011 top priced White Suffolk Ram purchased by Ian Proude



2012 YANTA ANNUAL RAM SALE

FRIDAY 21st SEPTEMBER 2012

2pm - Inspection from 12 noon

80 White Suffolk Rams 12-14mths old

50 Poll Merino Rams 13-14mths old

OJD Vaccinated - Brucellosis Accredited Free Lambplan & MerinoSelect Figures

MEASURING PERFORMANCE

CONTACT DETAILS

PRINCIPALS
 Donald Baillie 0428 305 940
 Martin Baillie 0457 880 434
 Julian Baillie 0428 897 289
 Email: yanta.tumbybay@bigpond.com

SELLING AGENT
 Colin McFarlane
 0457 736 285
 Southern Aus Livestock

