



Yanta Poll Merinos & White Suffolks

Yanta Poll Merinos & Yanta White Suffolks



WELCOME

One of the challenging things about farming is the variable seasons we have. This year we had only 8 mill for the first 4 months then well above average for the next two to put us back on track.

Although the cyclical nature of wool prices is sometime concerning they are still at a good profitable level. Meat prices enjoyed a terrific upward surge induced mainly by supply levels. This said the consumer demand for lamb is very strong.

SIRE PURCHASES

Once again I bought a ram at the Adelaide Show Ram Sale to help offset disappointing AI results. Mernowie 170432 was purchased for \$10,000 and featured very good Merino Select figures (view these on my website) especially good growth rate and Clean Fleece Weight.

I purchased two White Suffolk rams from Ashmore White Suffolk Stud, unfortunately one died before mating and has been replaced by one of their semen sires. Both White Suffolk rams look great and have very good LambPlan ASBVs. I used semen from leading sires from both breeds last year, more on that later.

MERINO WOOL GROWTH & PRESENTATION

This year the rams will again have over six months wool at sale time, giving potential buyers plenty of wool length to peruse. I also have a selection of rams from Roemahkita 160018 (Chalmers) bought last year for \$20,000 some are April born. These ones have not been overprepared and the dry opening to the season has taken a toll on their presentation. The saying "Bred Well Not Fed Well" is a creed I believe in, however most buyers still like to only judge rams visually. This rewards the master presenter and preparer of rams and doesn't help buyers evaluate their true genetic potential.

Sheep Genetics has developed the most advanced genetic evaluation scheme in the world to try and assist with this. I present ASBVs on sale rams and only buy rams that have these figures, and semen from sires who have

IMPORTANT DATES

**YANTA on property sale
Wednesday 28th August**

been progeny tested and hence have high accuracy for the important traits I value.

CONFERENCES

I again attended the annual White Suffolk conference at beautiful Robe. Once again great guest speakers, and lots of valuable information. Early June I went to a Sheep Genetic Workshop in Adelaide, at which some of their latest developments were explained, and gave attendees an excellent chance to ask questions one on one. This year Roemahkita 160018 (Chalmers) has been entered in the South Australian Sire Evaluation Scheme with the first results coming out early next year, followed by inspection field days. I look forward to the results with more studs keen on entering leading sires to be properly evaluated by progeny testing in these schemes.

SMART SHEPHERD

Last year I used the Smart Shepherd system to help mother up my merino stud lambs in two of the groups. Needless to say a few teething problems were encountered. This year we intend doing all the stud mobs and so far all has worked well with the early drop lambs, I encourage you to go to my website www.yantasheepstud.com to get a full coverage of my activities.

We aim to breed good rams for a reasonable cost price.





Yanta Poll Merinos & White Suffolks

Yanta Poll Merinos & Yanta White Suffolks



WHITE SUFFOLKS

Flock Number
Yanta 230706

Our genetic progress as shown by Lambplan continues in the right direction increasing both PWT and EMD. PWT is now at 15.75kg and EMD is at 1.6mm. Lambplan is now moving to a new index, Terminal Carcase Production (TCP), and this season will be the last of the Carcase+. TCP is a new index that focuses on improving the key production traits of growth and muscle whilst simultaneously maintaining eating quality. This sale will be the last you will see the C+ index on my sale rams.

Sires used in 2018

- Blue boxes indicate top 10% in Sheep Genetics
- Green boxes indicate top 20% in Sheep Genetics

Ashmore 130269 (AI)

- Used by 10 studs that include leading Aus Studs.
- Great WEC at **-53**
- Tremendous eating quality
- PWT **17.2** PMD 2.2 C+ **208**



Ashmore 160301 (AI)

- Bought \$10,000 at on property sale
- Son of well known Farrer 188 (AI)
- Long bodied ram
- PWT **19.7** PMD **-34** C+ **218**



Ashmore 170007

- Son of leading sire Bundarra Downs 122261
- Great hind quarters
- PWT **15.9** PEMD **3.1** C+ **217**



Yanta 170168

- Son of Farrer 188 (AI)
- Bred at Yanta
- Big barrel body
- PWT **16.9** C+ **206**

Yanta 140226

- Twin to 140227
- PWT **16.9** C+ **213**



Ashmore 150096

- Bought at Adelaide Elite Ram Sale 2016

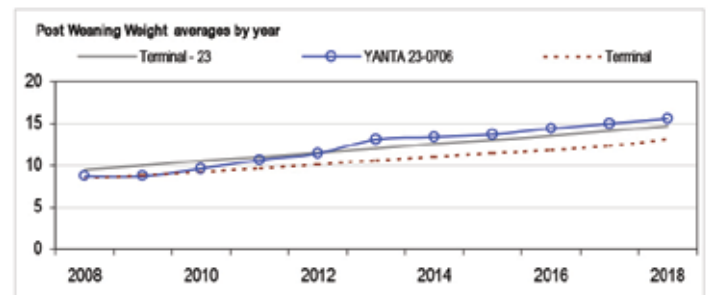
Yanta 170143

- Worked as a ram lamb
- Son of Bundarra Downs 122261 (AI)
- Big sheep with lovely outlook
- PWT **18.5** C+ **215**



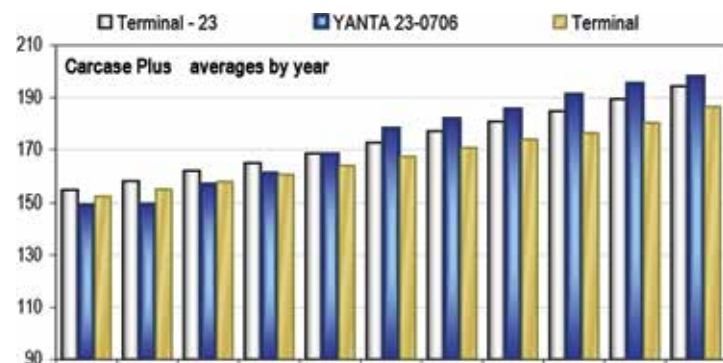
All worker rams and potential ram breeders have been tested for Hypotrichosis (a rare genetic condition resulting in hairlessness).

Post Weaning Weight Blue - Yanta 230706
Grey - White Suffolk average



Carcase+

Blue - Yanta 230706 White - White Suffolk average



PREVIOUS SALE RESULTS

YEAR	OFFERED	SOLD	AVERAGE	TOP PRICE
2012	78	40	\$740	\$3000
2013	69	62	\$821	\$1600
2014	60	54	\$850	\$2600
2015	66	66	\$1173	\$3200
2016	70	66	\$995	\$2400
2017	66	66	\$1230	\$2600
2018	76	70	\$1020	\$2300 (x2)

POLL MERINOS

Flock Number
Yanta 601451

This year I used 3 AI rams, principally Glenlea Park 011739, Collinsville 130242 and Poll Boonoke 150026

We still rigorously class all sheep for structure and conformation correctness, and place a strong emphasis on nourished, white, stylish elite wool.

Sires used in 2018

Blue boxes indicate top 10% in Sheep Genetics

Green boxes indicate top 20% in Sheep Genetics

Glenlea Park 011739 AI

- Big long bodied ram
- Used by 22 other studs in Sheep Genetics
- YWT 9.2 YCFW 20.8 DP+ 187



Collinsville Regal 130242 AI

- Sold for \$66,000 at Adelaide Show Ram Sale
- Well balanced rich wool
- Used by 9 studs in Sheep Genetics
- YGFW 26.5 DP+ 174



Roemahkita 160018 (Chalmers)

- Won Australian Merino All Purpose Champion Bendigo 2017
- Bought for \$20,000 at Adelaide Show Ram Sale 2017
- Lovely balanced ram with great structure
- DP+ 159



Kiandra 160064

- Top price at 2017 Kiandra on property sale
- Rich lustrous wool on a plain body
- YWT 11.2



PREVIOUS SALE RESULTS

YEAR	OFFERED	SOLD	AVERAGE	TOP PRICE
2012	48	30	\$860	\$1800
2013	48	31	\$755	\$1700
2014	48	26	\$773	\$2000
2015	36	33	\$1257	\$3100
2016	36	30	\$1107	\$3600
2017	36	35	\$1325	\$3100
2018	32	30	\$1200	\$2200 (x3)

PROGENY TEST RESULTS FOR CURRENT SIRES

SIRE	PWT post weaning weight kg ave. 48.6	YWT yearling weight kg ave. 71.0	PEMD eye muscle depth mm ave. 30.2	PFD fibre diameter micron ave. 16.9	PGFW greasy fleece weight kg ave. 3.2	PFDCV fibre diameter cv % ave. 17
Glenlea Park 011739	52.4	70.6	32.3	16.9	3.6	17.2
Collinsville 130242	50.2	71.7	30.0	17.1	4.0	18.0
Roemahkita 160018	47.5	70.2	39.9	16.9	3.0	16.6
Kiandra 160064	50.4	74.0	30.0	17.3	3.1	16.8



Yanta Poll Merinos & White Suffolks

Yanta Poll Merinos & Yanta White Suffolks



Equal top price poll merino ram, Yanta 160539, was sold for \$2,200. Son of \$66,000 Collinsville Ram, 130242. Brayden Southern, Mark Noonan, Elders, Don Baillie.



Equal top price White Suffolk Ram 160157 was sold to ram buyers Johnno and Grantley Telfer, Ungarra. Also pictured is Elders' Braden Southern and Yanta principle Don Baillie.

32nd ON PROPERTY SALE

Wednesday 28th August 2019

Sale starts 2pm

Inspections from 12 noon

www.yantasheepstuds.com.au and



80 White Suffolk Rams 12-14mths old

40 Poll Merino Rams 13-14mths old

MerinoSelect & Lambplan breeding values including GROWTH RATE

OJD Vaccinated - Brucellosis Accredited Free

"Select with ease with ASBVs"

Entrance Thorpes Road, off Mine Hill Road

Contact

Don Baillie 8688 2041

yanta.tumbybay@bigpond.com

Selling Agent

Braden Southern, Elders 0427 882 193

